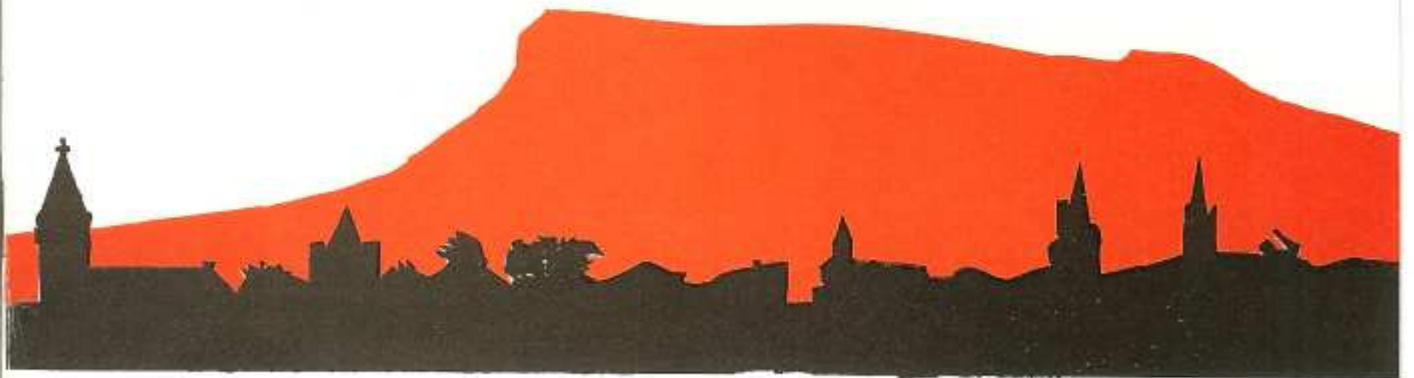


BAND
CONCERT
SLIGO
presents



SPRING CONCERT

FEATURING:-

Eynsford Concert Band Kent
County Sligo Golf Club Male Voice Choir,
Sligo Concert Band with Mary Doran

Aula Maxima, Sligo Regional
Technical College
at 8.00 p.m.
on Saturday, 4th May, 1996

Tickets: Adults-£5; Senior Citizens-£3; Children-£3

SPONSOR:



Canada Life

Mayor of Sligo

I wish to applaud Sligo Concert Band - a most capable ebullient and active musical group for arranging this their Seventh Annual Spring Concert. Sligo is indebted to them for their musical entertainment and most importantly for their voluntary contribution to the education of aspiring musicians.

To our Eynsford guests many of whom visit Ireland for the first time, I hope you find Sligo agreeably surprising and even on this short visit come to appreciate at least some of what Sligo has to offer. Hopefully this visit will be the first of many.

I believe we can expect a musical treat from our visitors and hope the concert is a big success for all concerned.



MATT LYONS,
MAYOR OF SLIGO.

MORTGAGES !! MORTGAGES !!

**YOU HAVE SEEN ALL THE ADS.,
OFFERS AND SPECIAL LOW RATES**

BUT WHICH SHOULD YOU CHOOSE ?

**WE CAN SIMPLIFY AND ARRANGE EVERYTHING FOR YOU.
WHY ? BECAUSE WE ARE INDEPENDENT BROKERS !**

**CONTACT: SEAN BREE OR JOHN O'CONNOR
FREEPHONE: 1800 33 44 33 OR CALL IN.**

The
Mortgage
Centre 

6, MARKIEVICZ ROAD, SLIGO • TEL.: 071 - 42811

MONDAY TO FRIDAY 9.00 - 6.00 P.M.

AUCTIONEERS & ESTATE AGENTS

Chairmans Welcome

The members, committee and directors of Sligo Concert Band are delighted to welcome you to this our Seventh Annual Concert.

On this occasion we are privileged indeed to share the stage with our distinguished guests from Sevenoaks in Kent - The Eynsford Concert Band under the Baton of Paul Welch. They have come to spend a few days in Sligo and will accompany us to Galway on Sunday for the Western Regional Association Band Festival. We hope their visit proves worthwhile and enjoyable for this well travelled band and we wish them a sincere "Cead Mile Failte".



Credit for this musical group must go to our Musical Director Mike Roberts - it is due entirely to his imagination and initiative that this has come to fruition.

Sligo Concert Band is completely reliant and dependent on the support of the local community and we take this opportunity to thank them for their goodwill towards the band and unfailing generosity. The same supporters tend to be approached time and time again and we wish to acknowledge this, and express our gratitude. We trust our efforts tonight will go some way towards repaying this debt, and hope our performances throughout the season will provide an added dimension to musical entertainment in Sligo.

The membership of the band comprises of approximately equal numbers of adults and children and there is a high turnover in some years as school is completed. We hope that those who leave this year do so with happy memories and an appreciation of music and we feel confident that their musical talents will find expression again in the not too distant future. To those who have joined us this year we hope that occasions such as this will cement their relationship with the band and be a reward for all the dedication and practice.

Musically the band has evolved over the year from a somewhat traditional military style band to the present "era of the forties" big band sound. Our rhythm section has been augmented by the famous Denis Phelan and this year for the first time we have a singer making her concert debut - Mary Doran. We are obliged to the Eynsford Concert Band for lending us trumpeter Dave Walker and to the Castlebar Band for Drummer Sean Burke.

We extend a particular welcome to our local guests, The County Sligo Golf Club Male Voice Choir. This is a young (relatively new !) choir, but tremendously dynamic and successful under the leadership of Sheila Crowley. We are certain they will be a big hit yet again tonight and we thank them for their enthusiastic support.

We are especially grateful to our concert sponsor - Canada Life, and finally hope that tonight's concert proves an enjoyable occasion for you all.

*Fergus Lawlor,
CHAIRMAN*

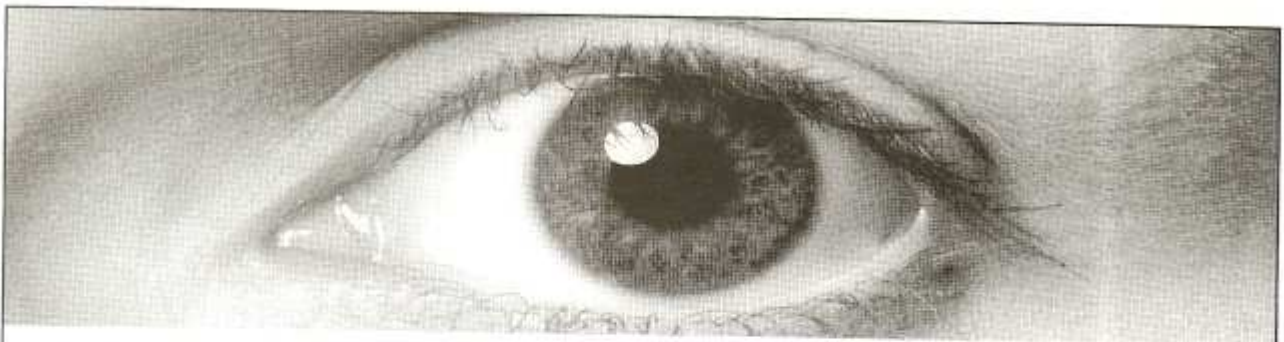
Michael John Roberts
Musical Director
Sligo Concert Band

Mike Roberts joined Sligo Concert Band in Autumn 1994 as Musical Director. His background in music is lengthy. Mike studied trumpet, harmony and counterpoint at the Welsh College of Music and Drama in Cardiff. He also studied composition at Harlech College. Mike joined the Franco - Welsh Orchestra on its seasonal tour, and also played with local orchestras and the Welsh Youth Orchestra. He also spent some time living in France before moving to Turkey where he taught English in Istanbul.



After returning to Wales, Mike moved again, this time to Ireland. He began farming outside the town of Westport, Co. Mayo and soon took up his musical interests again, joining the Castlebar and Westport Concert Band as Musical Director. In September 1994 he took up the post as Musical Director with Sligo Concert Band. Since then the band has performed on many occasions under his direction, most notably last years 750 Celebration Concert.

It was through the initiative of Mike Roberts that Sligo Concert Band was able to form the link with Eynsford Concert Band which makes tonight's concert possible. We thank him for his continued enthusiasm and vision.



Have you seen the light yet?

There is a growing awareness that we can each change the way we live for the better. For instance, by using energy more efficiently we can help safeguard resources for future generations.

And we can start with something as simple as a light bulb! Energy efficient bulbs use up to 80% less

electricity than ordinary bulbs and last eight times as long.

Fitting a lagging jacket to your hot water cylinder is another effective way to live more efficiently. By minimising heat loss it too saves you money.

The latest energy efficient washing machines use less electricity, less

water and less detergent. And now, new energy labels for washing machines as well as for fridges and freezers highlight which models perform most efficiently.

We'll be pleased to enlighten you more about the many benefits of energy efficient products - just call to your local ESB shop.



ENLIGHTENED ENERGY

SLIGO CONCERT BAND

**INSTRUMENT
APPEAL**

SOME OF THE MORE EXPENSIVE INSTRUMENTS IN THE BRASS SECTION OF THE BAND WERE OBTAINED UNDER A RENTAL AGREEMENT WHICH HAS PROVEN TO BE A GREAT DRAIN ON THE FINANCES OF THE BAND OVER FIVE YEARS.

WE ARE NOW IN A POSITION WHERE WE NEED TO PURCHASE A NUMBER OF INSTRUMENTS TO REPLACE THOSE WHICH WILL BE UNAVAILABLE TO THE BAND WHEN THE AGREEMENT FINALLY EXPIRES IN MID SUMMER.

WE HAVE HAD GENEROUS SPONSORSHIP FOR SOME OF THE INSTRUMENTS NOTABLY FROM MARTIN REILLY MOTORS, STIEFEL LABORATORIES, BANK OF IRELAND, TELECOM EIREANN, AILLED IRISH BANK AMONG OTHERS, BUT ARE STILL SHORT OF SPONSORSHIP FOR AN E^D HORN, TROMBONE, EUPHONIUM AND A TUBA.

THIS IS A "ONCE-OFF" APPEAL TO SPONSORS FOR AN INSTRUMENT WHICH WOULD THEN BE A PERMANENT FEATURE IN THE BAND, WOULD BENEFIT MANY PLAYERS OVER THE YEARS AND BE A VITAL CONTRIBUTION TO MUSIC EDUCATION PERFORMANCE IN SLIGO.

SO, IF THERE ARE ANY GENEROUS PEOPLE OUT THERE WITH AN INTEREST IN MUSIC AND IN THE HEALTH AND WELLBEING OF SLIGO CONCERT BAND WE WOULD BE DELIGHTED TO HEAR FROM YOU.

**FERGUS LAWLOR,
CHAIRMAN, SLIGO CONCERT BAND.**



COUNTY SLIGO GOLF CLUB MALE VOICE CHOIR

DIRECTOR - SHEILA CROWLEY

County Sligo Golf Club Male Voice Choir was founded in the Autumn of 1993. Since then the choir has delighted Sligo audiences with its wide ranging repertoire of classical and popular music.

The choir has completed successfully at the Ayrshire Music Festival in Scotland, having come first in its competition and first overall, and more recently in Bangor where they took second place.

On their Festival tours the choir members have savoured the delights of Scotland and Northern Ireland's most prestigious golf courses.

The choir has to its credit a number of television and radio performances including "Heartlands" which was televised on County Sligo Golf Course, and more recently they recorded live a religious programme from R.T.E.'s studio in Dublin. The choir rehearses every week throughout the winter under musical director - Sheila Crowley. The choir is accompanied by Niamh Crowley.

SLIGO CONCERT BAND MEMBERS

MUSICAL DIRECTOR : MICHAEL ROBERTS

WOODWIND:

Flute: *Michael Kilcoyne
Vivien Murray
Naomi McGloin
Claire Mullen
Niamh Martin
Edel Brennan*

Clarinet: *Eamon McCole
Simone Hickey
Grace Coyne
Michelle Griffin
Peadar O'Kelly
Carthage Carroll*

Saxophone: *Eamon McCole
Simone Hickey
Grace Coyne
Finn Conlon*

BRASS

Trumpet: *Brian Gallagher
Carl Nielsen
Emma Larkin
Sean Finan
Martin Brennan*

E Flat Horn: *Rachel Swift
Gwenn Ward
Siun McMorro*

Trombone: *Tom Egan
Mary O'Doherty*

Euphonium: *Fergus Lawlor*

Baritone: *Niall Winters*

Tuba: *Ronan McLaughlin
Eugene Devaney
Billy Fitzgerald*

PERCUSSION: *Paul Chute*

EYNSFORD CONCERT BAND MEMBERS

MUSICAL DIRECTOR : PAUL WELCH

CLARINETS:

*Andrew Mattison
Sandra Lane
Wendy Lane
Joe Stafford
Christine Weller
Stephen Bignell
Brian Evans*

OBOE:

Joe Chapman

FLUTES:

*Nigel Keen
Alison Huges
Claire Chalkley
Louise Sherwood*

SAXOPHONES:

*Marie Chalkley-Bowman
Graham Bell
Ian Page*

FRENCH HORNS:

*Graham Ivory
Marion Potter*

TRUMPETS:

*David Walker
Colin Palmer
Steve Dury
Ron Hazelwood
Paul Boyd*

TROMBONE:

*Mark Goddard
Michael Barker
Darren Biddulph*

EUPHONIUM:

Paul Gould

TUBA:

*Brian Bennett
Stephen Bennett*

PERCUSSION:

*Dorian Burt
Trevor Edwards*

CONCERT PROGRAMME

PART I

SLIGO CONCERT BAND:-

St. Louis Blues

Arr. J. Bocook

Londonderry Air

Traditional
Arr. S. Johnson

Three Folk Dances

Traditional
Arr. V. L. Gummer

GUEST

COUNTY SLIGO GOLF CLUB MALE VOICE CHOIR

SLIGO CONCERT BAND:

An Irving Berlin Salute

Arr. P. Jennings

Phil the Fluter

Traditional
Arr. M. Brand

WITH GUEST SOLOIST:

MARY DORAN

**Someone to Watch Over Me
Embraceable You**

G. Gershwin
Arr. L. Kerchner

SLIGO CONCERT BAND:

Blues in the Night

E. Osterling

Cole Porter in Concert

Arr. E. de Borgo

~ INTERVAL ~

CONCERT PROGRAMME
PART II

EYNSFORD CONCERT BAND:-

The January February March	Gillis
A Staffordshire Festival Overture	Johnson
Waltz - Masquerade	Khachaturian

WITH GUEST SOLOIST:
STEVE DRURY

By the time I get to Phoenix	Webb
Post Horn Galop	Koenig

EYNSFORD CONCERT BAND:

The Irish Washerwoman	Anderson
Nott'num Town	Street
Toccata in D minor	Bach

GUEST

COUNTY SLIGO GOLF CLUB MALE VOICE CHOIR

~ FINALE ~

SLIGO AND EYNSFORD BANDS AND CHOIR

The Slaves Chorus From Nabucco	Verdi
The European Anthem - Ode To Joy	Beethoven

M.C. Lloyd Sweetnam

Paul Welch
Musical Director
Eynsford Concert Band



Paul was born in Somerset and began his musical training at the age of 12 when he took up the trombone at school. Over the next five years he played with many concert bands and orchestras including the Somerset County Youth and Senior Orchestras.

A move to London in 1969 was the first step on a journey which has led to many European countries as well as North and South America, Canada, Australia and many more.

Teaching has been a large part of Paul's life and he particularly enjoyed his time at The Royal Society for the Blind School, Dorton House at Seal near Sevenoaks. Also his time as the European Programme Director for the "Bands of America" organisation which involved bringing many high school and university bands to perform in Europe.

MARY DORAN

Mary has just celebrated her 20th birthday and is a 2nd year student at UCD reading English and Greek and Roman Civilisation.



She has sung with the Sligo Fun Company and the Sligo Choral Society. At present she enjoys singing jazz.



THE EYNSFORD CONCERT BAND

Eynsford is a small country Village situated a little north of Sevenoaks in Kent. Its musical heritage began in 1972 when Robin O'Connell, a local Teacher, began a musical group of young amateur musicians.

Under Robin's direction, these lowly beginnings were transformed and the group began to grow with players from surrounding areas joining rehearsals and contributing to raising musical standards. Numerous local concerts were performed.

Over the next 23 years the band earned recognition and it's reputation began to grow. Concert performances have included those at the Queen Elizabeth Hall on The South Bank, London; with the London Philharmonic Orchestra at the Royal Albert Hall; and even a BBC television broadcast.

Throughout this time the band has been pleased to provide a "temporary home" for many young musicians going on to the Royal College of Music and aspiring to become professional artists.

In recent years the band has ventured overseas with successful tours of Germany, Austria, Malta and Cyprus. In 1993 the band enjoyed a more adventurous and memorable tour of Canada with performances in Toronto, Ottawa and Montreal.

In July 1995 the band was invited to Spain as guests of the City of Valencia to per at the Palau de la Musica during their annual Valencia Music Festival. This was an honour the band enjoyed immensely and performance was enthusiastically received by a full house audience. Other performances followed at venues in Volencis, Sitges and Barcelona. The band also provided music for local VE and VJ Day celebrations together with that for Remembrance Day Service.



County Sligo Golf Club

(Rosses Point)

Rosses Point, Co. Sligo
Telephone: 071 - 77186 Fax: 071 - 77460

A centenarian with all the dignity and maturity of age, this is one of Ireland's great championship links. Described by Peter Alliss as "... a tremendous test for the highest quality player and great fun for the modest competitor", the club has hosted most of Ireland's major championships in its long and venerable history. Three large beaches beneath the cliffs keep the Atlantic at bay to the west of the course, while towering Benbulbin competes with the ocean for scenic splendour on the land side. The wind from the sea is a constant factor but the 3rd, 5th, 10th and 14th holes have very satisfying downhill drives to compensate. Venue of Home International, 1991.

NEAREST TOWN:

Sligo 8km

CLUB FACTS:

Length of Course: 6,003m
No. of Holes: 18 holes
Par: 71
Type of Course: Links
Club Shop: Yes
Tuition: Yes
Club Professional: Leslie Robinson

PRACTICE FACILITIES:

Yes

CATERING:

Bar & Restaurant

CONTACT:

Secretary / Manager
Mr. Enda Lonergan

HIRE SERVICE:

Club Hire, Caddy Car Hire,
Caddies (during summer)

TELEPHONE No.: 071 - 77186 OR 77134

FAX No.: 071 - 77460

PROFESSIONAL No.: 071 - 77171



LOWER BRASS

Billy Fitzgerald, Niall Winters, Fergus Lawlor.



FLUTE SECTION

(L-R)-Vivien Murray, Claire Mullen, Niamh Martin, Naomi McGloin, Edel Brennan. (Absent from Photo:- Michael Kilcoyne)



TROMBONE SECTION

Tom Egan, Mary O'Doherty



HORN SECTION

(L-R)- Gwenn Ward, Rachel Swift, Siun McMorrow



TRUMPET SECTION

*(L-R):- Carl Nielsen, Martin Brennan, Brian Gallagher
(Absent from Photo):- Emma Larkin, Sean Finan*



BASS SECTION

Ronan McLaughlin, Eugene Devaney



BASS GUITAR:
Denis Phelan



CLARINET / SAXOPHONE

*(L-R):- Finn Conlon, Eamonn McCole, Michelle Griffin, Grace Coyne,
(Absent from photo):- Simone Hickey, Peadar O'Kelly*