

In Aid of North West Hospice

SLIGO CONCERT
BAND

Sligo
arts festival

PRESENTS

“Musical Delights”



Featuring

EYNSFORD CONCERT BAND

THE BREFFNI SINGERS

and

SLIGO CONCERT BAND with Mary Doran

Aula Maxima R.T.C. Sligo

Sat. 31st May 1997 – 8 p.m.

Sponsored by



Canada Life

Sligo Concert Band

Musical Director:

Mike Roberts

Committee

Fergus Lawlor: Chairman
Angela Darcy: Secretary
Mary O'Doherty: Treasurer
Eugene Devanney
Michelle Griffen
Marcey Coyne
Mary Winters
Brian Gallagher
Paul Chute
Lloyd Sweetnam
Clare Mullen: Juveniles

Directors

Brian Gallagher: Chairman
Dermot Finan: Treasurer
Gerry Coyne: Secretary
Carthage Carroll
Martin Reilly
Pat O'Gara

Interested in joining Sligo Concert Band?

.....
If you enjoyed tonight's concert, perhaps you or someone you know would like to learn an instrument and play with Sligo Concert Band. We are always interested in training new players. Please ask any member of Sligo Concert Band for details.

Sligo Concert Band would like to thank Feehily's Flowers for their Flowers for tonight's concert and their generosity throughout the year and Summerhill College for the use of their premises throughout the year.

MAYOR OF SLIGO

I wish to congratulate Sligo Concert Band for their efforts in putting this concert together and am delighted to welcome the Eynsford Concert Band, visiting from Kent. I am glad to see the Sligo Concert Band with its blend of youth and adults is carrying on a fine tradition and Sligo is indebted to them for their voluntary contribution to the education of aspiring musicians.

I am delighted that this event will see a donation to North West Hospice and hope it is a big success.

I wish to congratulate Canada Life for their sponsorship of this event and hope it is a delight for you all.



Seamus Dolan
MAYOR OF SLIGO



Our hotel is situated in the centre of Sligo town, on the banks of the Garavogue River. All rooms with colour T.V., telephone. Our de-luxe rooms have hairdryers, hospitality trays, trouser press, and "aerospa" baths.

The Cygnet Restaurant, in its unique setting, offers traditional fare using local fresh produce.

Our extensive "Seafood Menu" includes fresh lobster.

Hotel Silver Swan,
Hyde Bridge, Sligo, Ireland.

Telephone: 071 - 43231 / 2 / 3 Fax: 071 - 42232

CHAIRMANS WELCOME

Sligo Concert Band is delighted to welcome you all to our concert, "Musical Delights".

Of great significance to the musical development and ambition of our band was the visit of the Eynsford Concert Band to Sligo last year. The success of last years visit is measured by their return this year for a repeat performance as part of a western tour which includes performances in Athlone and Castlebar. We again extend a Cead Mile Failte, hope they enjoyed the added dimension of the Sligo Arts Festival and their participation in it during their weeks stay and trust they leave with happy memories of Sligo.

Another significant development for the Band this year was the addition of five players from Ballyshannon to our ranks. This was not simply the addition of new blood and experienced musicians but an input of unbridled enthusiasm which saw their attendance at practices twice a week throughout the

Winter. Our "open door" policy has also brought us members from Castlebar and Manorhamilton and our next big project is a visit to Kempton in August.

The Breffini Singers under Margaret Connolly are especially welcome guests to our concert. Sligo Concert Band had the privilege of performing with them in Manorhamilton at Christmas and take great pleasure in welcoming them here tonight.

We are delighted to have singer Mary Doran join us once again. This year she is also singing with Eynsford Concert Band in both Sligo and Castlebar.

We are especially grateful to our sponsor Canada Life who this year sponsor all three performances by the Eynsford Concert Band and we are in the happy position where we can help the North West Hospice from the proceeds of tonight's concert.

On my own behalf I would like to thank all of the helpers, the committee, our M.C. Lloyd Sweetnam and Musical Director Mike Roberts for all the dedication and hard work that preceded this concert.

We sincerely hope that this concert proves to be a delight and memorable occasion for you all.

Fergus Lawlor,
CHAIRMAN



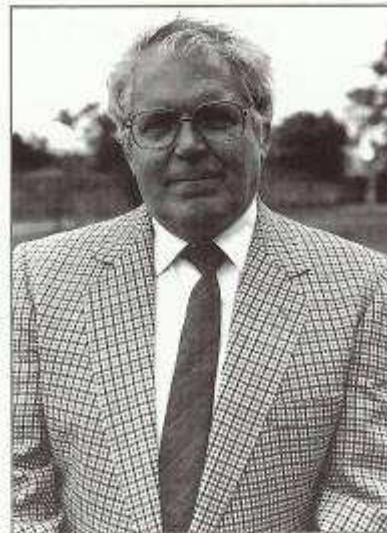
**MICHAEL JOHN ROBERTS - MUSICAL DIRECTOR
SLIGO CONCERT BAND**

Mike Roberts joined Sligo Concert Band in Autumn 1994 as Musical Director. His background in music is lengthy. Mike studied trumpet, harmony and counterpoint at the Welsh College of Music and Drama in Cardiff. He also studied composition at Harlech College. Mike joined the Franco - Welsh Orchestra on its seasonal town, and also played with local orchestras and the Welsh Youth Orchestra. He also spent some time living in France before moving to Turkey where he taught English in Istanbul.

After returning to Wales, Mike moved again, this time to Ireland. He began farming outside the town of Westport, Co. Mayo and soon took up his musical interests again, joining the Castlebar and Westport Concert Band as Musical

Director. In September 1994 he took up the post as Musical Director with Sligo Concert Band. Since then the band has performed on many occasions under his direction, most notably last years Spring Concert also with the Eynsford Concert Band.

It was through the initiative of Mike Roberts that Sligo Concert Band was able to form the link with Eynsford Concert Band which makes tonight's concert possible. We thank him for his continued enthusiasm and vision.




THE SOUTHERN HOTEL
AND LEISURE CENTRE

On the Strandhill Road, Sligo Town, Ireland. Telephone: 071 62101. Facsimile: 071 60328.

Continued success to the Sligo Concert Band
From
Management and Staff of the Southern Hotel

All bedrooms En-Suite, T.V., Tea/Coffee, Hairdryers
Excellent Restaurant and Bar Facilities

We Cater for All Your Needs



Stay, Relax, and Enjoy!



THE BREFINI SINGERS.

The Brefini Singers have been together for almost a quarter of a century, having been founded in 1973. The forty or so enthusiastic members sing for pleasure - the pleasure they themselves derive from good music and the pleasure it gives to others.

The group is based in Manorhamilton, Co. Leitrim but the members gather from four counties - Leitrim, Sligo, Donegal and Cavan. Repertoire is both religious and secular. Indeed their programme could include anything from Bach to the Beatles or from Palestrina to Llyod Webber!

Over the years, the Brefini Singers have performed just about everywhere - in churches, at concerts, at Arts Festivals, at Feiseanna, in musicals. They have sung at venues throughout Ireland and Wales and have had the honour of performing in the National Concert Hall in Dublin. In the past year, they have shared concerts with choirs from France and Wales, joined with Scottish-Opera-for -All in a very successful cross border project and of course, were delighted to welcome as their guests in Manorhamilton, the Sligo Concert Band.

Since 1980, the Brefini Singers have performed under the baton of Musical Director Margaret Connolly. Margaret is a teacher in Manorhamilton and has been involved with choirs since her childhood.

MARY DORAN

Mary Doran has just celebrated her 21st birthday and is reading English and Greek and Roman Civilisation at U.C.D.

She has sung with the Sligo Fun Company and the Sligo Choral Society. Since her debut last year with the Sligo Concert Band, she has performed with them on many occasions. Mary is a pupil of renowned singing teacher Veronica Dunne and David Wray at the Leinster School of Music.



The Sligo Concert Band is very pleased that Mary has returned to sing with them this year in their concert "Musical Delights".



SLIGO CONCERT BAND- BRASS SECTION

Back Row: Brian Gallagher, Ronan McLoughlin, Eugene Devanney, Gerry Murphy, Mary o'Doherty, Sean Travers, Fergus Lawlor, Michael Donagher.

Front Row: Billy Fitzgerald, Philip Darcy, Niall Winters, Sean Finan, Rachel Swift.

Missing from photo: Carl Nielsen - Trumpet.



SLIGO CONCERT BAND - SAXOPHONE SECTION
Finn Conlon, Simone Hickey, Michael Gallagher.



SLIGO CONCERT BAND- FLUTE SECTION

**Niamh Martin, Gemma Corcoran, Michael Kilcoyne, Edel Brennan,
Vivien Murray, Clare Mullen. Missing from photo: Naomi McGloin**



SLIGO CONCERT BAND- CLARINET SECTION

Eugene McLoughlin, Peadar O'Kelly, Eamonn McCole, Grace Coyne, Michael Griffin.



SLIGO CONCERT BAND- PERCUSSION SECTION

Paul Chute, John KilKelly, Margo Russell, Denis Phelan, Tommy Gallagher.

Concert Programme
Part 1

SLIGO CONCERT BAND

- Sousa Confuser.....Arr. Michael Brand.
Toşelli's Serenade.....Arr. Polhamus.
Summer Dreamin'.....John Cacavas.
* Sentimental Journey.....Bud Gren and
Les Brown.
*Duet.....Margo Russell and Denis Phelan.
Old Blue Eyes.....Arr. Jerry Brubaker.

GUEST CHOIR
Brefini Singers.

- A Winter Largo.....Arr. David Farnon.
(VIVALDI)
Brindisi.....Arr. J. Brand.
(VERDI)
Pavane (Pour une enfante defunte)... Arr. R.W. Smith.
(RAVEL)
* Someone to watch over me/
Embrace by You.....Arr. L. Kerchner.
Gershwin
*Soloist Mary Doran
Finale Theme.....Arr. J. Ployhar.
(DVORAK)

Concert Programme
Part 2

EYNSFORD CONCERT BAND

Prelude Selection

Concert Prelude.....Sparke.

My Fair Lady.....Loewe.

* Vocal But Not For Me.....Gershwin

**Soloist Mary Doran*

Dance Slavonic Dance No. 8.....Dvorak

GUEST CHOIR
Brefini Singers.

SUITE Pineapple Poll.....Sullivan

NOVELTY Hyken's Serenade

OVERTURE Festive Overture.....Shostakovich

COMBINED BANDS

Radetsky March.....Strauss

FINALE WITH CHOIR

Speed your Journey.....Verdi

MASTER OF CEREMONIES:

Lloyd Sweetnam.

**PAUL WELCH - MUSICAL DIRECTOR
EYNSFORD CONCERT BAND**

Paul was born in Somerset and began his musical training at the age of 12 when he took up the trombone at school. Over the next five years he played with many concert bands and orchestras including the Somerset County Youth and Senior Orchestras.



A move to London in 1969 was the first step on a journey which has led to many European countries as well as North and South America, Canada, Australia and many more.

Teaching has been a large part of Paul's life and he particularly enjoyed his time at The Royal Society for the Blind School, Dorton House at Seal near Sevenoaks. Also his time as the European Programme Director for the "Bands of America" organisation which involved bringing many high school and university bands to perform in Europe.



(strictly over 21)

• All modern lighting/sounds etc. Top DJs.

The EMBASSY
Snooker Rooms & Lounge Bar

- Full size championship tables
- Booking facilities. Visitors welcome.
- TV Room

JOHN F. KENNEDY PARADE SLIGO
TELEPHONE 071-61250 60690 44232

Best wishes to
The Sligo Concert Band
From

The EMBASSY
We have it all!

The EMBASSY
Restaurant

↳ Lunches: 12.30 - 2.30; A La Carte 6.00 - 9.00
Last orders 9.00



EYNSFORD CONCERT BAND

Flute: Alison Hughes, Claire Chalkley, Louise Shewood, Jo Culley, *Trumpet:* David Walker, Colin Palmer, Ron Hazelwood, George Reynolds, Alison Bellamy, *Oboe:* Jo Chapman, *Bb Clarinet:* Andrew Mattison, Sandra Lane, Julia Hones, Wendy Lane, Joe Stafford, Brian Evans, Mike Claridge, Jo Lord, *Trombone:* Paul Gould, Mike Barker, Darren Biddulph, *French Horn:* Amy Burden, Ian Williams, *Bass Clarinet:* Bob Stewart, *Bassoon:* Sian Millar, *Tuba:* Brian Bennett, Stephen Bennett, *Saxophone:* Marie Chalkley - Bowman, Daryl Oliver, Graham Bell, Ian Page, *Percussion:* Dorrian Burt, Nicholas Chant.

EYNSFORD CONCERT BAND

Eynsford Concert Band was formed in 1972 as a local community band. From humble beginnings, featuring a handful of keen musicians eager to share their talents, the band has blossomed into an enthusiastic and highly motivated fraternity, entertaining audiences world-wide including Malta, Canada, Cyprus, Austria, Spain and Germany, and nearer to home the Royal Albert Hall with the London Philharmonic Orchestra and several concerts at the Queen Elizabeth on the South Bank. The band's diverse variety of inspired music encompassing both the popular and classical coupled with sheer enthusiasm has enabled them to produce a first class CD entitled "By the Ford", copies of which are available during the interval. The Band is very grateful to the Sligo Band and in particular Fergus Lawlor and Mike Robert's for all the hard work they have put into making this tour so enjoyable. Since our visit to Sligo last May the Band has performed in Regents Park London for Sky Television where we performed the "1812" Overture complete with cannon effects and fireworks. Later in the year the Band was invited to play in Birmingham for the Atherton Choral Society's Christmas Concert, to an audience of some nine hundred. We hope you have enjoyed tonight's performance and look forward to the day we return.